

Section for Long-Term Care Regulation Update



TRACY NIEKAMP, ASSISTANT ADMINISTRATOR

Outbreak Status

Where we are:

- As of October 11, 2021, 190 communities have a current outbreak. Of these, 39 are RCF/ALF and 151 are ICF/SNF.

SLCR Region Outbreaks				
	9/2	9/14	10/11	
Region 1 - SW	51	27 (-24)	36 (+9)	
Region 2 - SE	51	59 (+8)	29 (-30)	
Region 3 - KC	52	44 (-8)	32 (-12)	
Region 4 - NW	21	18 (-3)	16 (-2)	
Region 5 – NE	25	22 (-3)	20 (-2)	
Region 6 – Central	40	32 (-8)	37 (+5)	
Region 7 - STL	35	31 (-4)	20 (-11)	
TOTAL	275	233 (-42)	190 (-43)	

Outbreak Status

Where we were:

- At our peak (December 13, 2020), 674 communities had a current outbreak.
- On April 1, 2021, 43 communities had a current outbreak.

From the beginning:

- Outbreaks have occurred in 978/1,189 (82%) long term care communities. This includes 436 RCF/ALF and 542 ICF/SNF communities.

Outbreak Status

Extent of Outbreaks:

■ June 15 – August 4, 2021

- 11% homes have 10 or more total positive (resident and staff) cases compared to 31% for same timeframe ending 12/15/20
- 3.5% homes have 20 or more total positive (resident and staff) cases compared to 17% for same timeframe ending 12/15/20
- 4% homes have 10 or more total positive resident cases compared to 23% for same timeframe ending 12/15/20
- .5% homes have 20 or more total positive resident cases compared to 11% for same timeframe ending 12/15/20

RCF-ALF COVID Testing

■ CDC recommendations as of September 10, 2021

Routine testing of asymptomatic employees should be as follows:

- Fully vaccinated HCP may be exempt from expanded screening testing.
- For unvaccinated, testing based on the level of community transmission as follows:
 - Counties with substantial to high community transmission, unvaccinated HCP should test twice a week. (If unvaccinated staff work infrequently at these facilities, they should ideally be tested within the 3 days before their shift (including the day of the shift)).
 - Counties with moderate community transmission, unvaccinated staff should test once a week.
 - Counties with low community transmission, expanded testing for asymptomatic staff, regardless of vaccination status, is not recommended.

RCF-ALF COVID Testing

CDC recommendations as of September 10, 2021

- **Outbreak testing** – option to perform testing through two approaches, contact tracing or broad-based (facility-wide) testing.
 - If close contacts can be identified, can choose to conduct focused testing based on known close contacts.
 - If close contacts cannot be identified or if directed by local jurisdiction, facility-wide or group-level testing required.

https://www.cdc.gov/coronavirus/2019-ncov/hcp/long-term-care.html#anchor_1631031062858

BinaxNOW

- To reinstitute federal shipments of BinaxNOW tests, email Binax.Team@hhs.gov Provide the facility information, shipping address and the BinaxNOW delivery point of contact. It can take up to 2 weeks to begin receiving shipments again.
- If you are receiving direct federal allocations of BinaxNOW and would like to cancel those allocations, please submit the cancellation request to ARDxUSGovernmentSupport@abbott.com . Note: this is a cancellation not a pause. Pausing allocations is not an option. Once received allocations can be transferred to other facilities within the state.
- Abbott technical assistance team to report any concerns with test kits or contents received in federal shipments: ts.scr@abbott.com or 1-800-257-9525.
- Requests for state supply of BinaxNOW limited to a two week supply.

DHSS Website- COVID Resources

COVID-19 Main Page –

<https://health.mo.gov/living/healthcondiseases/communicable/novel-coronavirus/>

Reporting of Outbreaks -

<https://health.mo.gov/living/healthcondiseases/communicable/novel-coronavirus/>

COVID-19 Dashboard -

<https://health.mo.gov/living/healthcondiseases/communicable/novel-coronavirus/data/>

Health Care Professionals Page -

<https://health.mo.gov/living/healthcondiseases/communicable/novel-coronavirus/professionals.php>

DHSS Website- COVID Resources

PPE Resources -

<https://health.mo.gov/living/healthcondiseases/communicable/novel-coronavirus/ppe.php>

Testing Supplies (through MSPHL) -

<https://health.mo.gov/living/healthcondiseases/communicable/novel-coronavirus/specimen-collection-supplies.php>

BinaxNOW Testing Supplies – <https://missouri-abbott-binaxnow-antigen-test-kit-program-mophep.hub.arcgis.com/>

- Recoupment of BinaxNOW testing supplies ended June 11, 2021

Vaccine Update

Booster dose planning

- Survey to communities to assess readiness to administer third doses
 - Those that do not have an existing relationship with a pharmacy, LPHA, etc. to administer doses will receive assistance establishing partnership
- Federal pharmacy partnership program will not be involved in onsite clinics
- September 24, 2021 CDC Advisory Committee on Immunization Practices' (ACIP) recommendation for a booster shot of the Pfizer-BioNTech COVID-19 vaccine in certain populations and also recommended a booster dose for those in high risk occupational and institutional settings was issued.

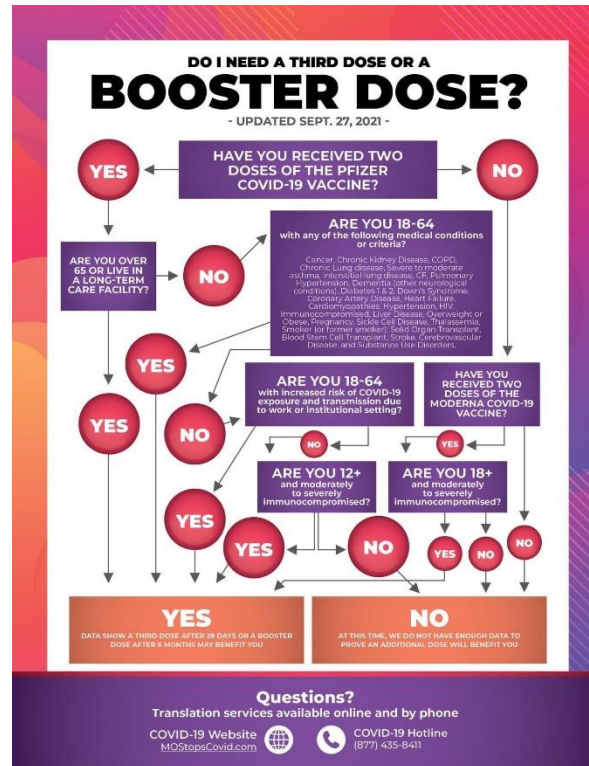
Vaccine Update

CDC recommends:

- People 65 years and older and residents in long-term care settings **should** receive a booster shot of Pfizer vaccine at least 6 months after their primary series.
- People aged 50–64 years with [underlying medical conditions](#) **should** receive a booster shot of Pfizer vaccine at least 6 months after their primary series.

<https://www.cdc.gov/media/releases/2021/p0924-booster-recommendations-.html>

Vaccine Update



<https://covidvaccine.mo.gov/facts/Third-Dose-and-Booster-Infographic.pdf>

Vaccine Requirements

- CMS, in collaboration with the CDC, is developing regulations requiring staff vaccinations within Medicare and Medicaid certified providers.
- At this time, no additional information released by CMS.
- Questions:
 - Applicability to contract staff, agency staff, etc.
 - Timeframe for compliance – existing staff, new staff
 - 3rd dose
 - Exemptions
 - How enforced

Visit Guidance

Indoor Visitation

- Facilities should allow indoor visitation at all times and for all residents (regardless of vaccination status), except for a few circumstances when visitation should be limited due to a high risk of COVID-19 transmission. These scenarios include limiting indoor visitation for:
 - Unvaccinated residents, if the nursing home's COVID-19 county positivity rate is >10% (as evidenced by a "red" designation on the county positivity rates published by CMS) **and** <70% of residents in the facility are fully vaccinated;
 - Residents with COVID-19 infection, whether vaccinated or unvaccinated until they have met the criteria to discontinue Transmission-Based Precautions; or
 - Residents in quarantine, whether vaccinated or unvaccinated, until they have met criteria for release from quarantine. For additional information regarding vaccinated residents, refer to this CDC guidance.
- Compassionate Care visits should be allowed at all times, for any resident regardless of a resident's vaccination status, the county's COVID-19 positivity rate, or an outbreak.

Visit Guidance

- When a new case of COVID-19 among residents or staff is facility identified, a facility should immediately begin outbreak testing and suspend *indoor* visitation (except compassionate care visits), until at least one round of facility-wide testing is completed.
- Visitation can resume based on the following criteria:
 - If the first round of outbreak testing reveals no additional COVID-19 cases in other areas (e.g., units) of the facility, then visitation can resume for residents in areas/units with no COVID-19 cases. However, the facility should suspend visitation on the affected unit until the facility meets the criteria to discontinue outbreak testing.
 - For example, if the first round of outbreak testing reveals two more COVID-19 cases in the same unit as the original case, but not in other units, visitation can resume for residents in areas/units with no COVID-19 cases.
 - If the first round of outbreak testing reveals one or more additional COVID-19 cases in other areas/units of the facility (e.g., new cases in two or more units), then facilities should suspend visitation for all residents (vaccinated and unvaccinated), until the facility meets the criteria to discontinue outbreak testing.
 - If subsequent rounds of outbreak testing identify one or more additional COVID-19 cases in other areas/units of the facility, then facilities should suspend visitation for all residents (vaccinated and unvaccinated), until the facility meets the criteria to discontinue outbreak testing.

SLCR Activities

Outbreak Response

COVID Hotline

Focused Infection Control Surveys

- 3,002 completed since mid-May

Routine Surveys and Complaint Investigations

- Focus on complaint backlog and overdue surveys

Common Infection Control Citations

- Positive/negative residents in same room
- PPE use
- Hand hygiene
- Mask use

SLCR Activities

- Approximately 80% of inspections and recertification surveys are overdue in MO
- January 11, 2021- SLCR had 4,664 complaints pending an onsite investigation.
- Since January 11, 2021- SLCR received an additional 8,113 complaints.
- As of 10/1/2021, SLCR has 2,506 complaints pending an onsite investigation.
- SLCR staff have investigated 10,271 complaints since January, 2021.

SLCR Activities

Class I/Immediate Jeopardy Citations

2019 – 60

2020 – 33

2021- as of 10/6 – 63 (10+ pending)

Common Citations in 2021

- Change in condition
- Elopement
- CPR
- Abuse

State Regulations

Nursing Facility Level of Care

- Proposed regulations published on February 16, 2021 -
<https://www.sos.mo.gov/CMSImages/AdRules/moreg/2021/v46n4Feb16/v46n4b.pdf>
- Effective date October 31, 2021
- Electronic submission of assessments

State Regulations

Certified Nurse Aide

- <https://health.mo.gov/safety/cnaregistry/index.php>
- All CNA initial testing completed by Headmaster after 8/31
- Challenge exams may be completed by ordering through DHSS (until proposed rules are effective – 12/24/21) or through Headmaster
- Curriculum – any manual (no more than 10 years old) that includes topics listed in the regulation or curriculum developed by instructor
- New curriculum to be used by 8/31/21
- Certification within 24-48 hours after successful test completion

State Regulations

Certified Nurse Aide

- Instructors must create profile in TMU and start student profiles by the 14th day after course begins, verify completion, upload AB form and submit payment. Student will then be ready to test.
- Facilities can sign up to become testing site through Headmaster
- Upcoming webinars in October, November

State Regulations

Onsite Clinical and On the Job Training for Students Entering Health Care (Nurses, Nurse Aides, Therapy)

- Communities can be a clinical or on the job training sight for students entering health care fields.
- Communities can use the guidance from CMS memo QSO 20-39-NH and DHSS visitation guidance as a way to say “YES” to hosting schools who are training our next workforce in long term care. Students can be considered health care workers who are not employees of the facility but provide direct care to the facility’s residents.
- They can be permitted to come into the facility as long as they are not subject to a work exclusion due to an exposure to COVID-19 or showing signs or symptoms of COVID-19 after being screened.
- Communities should work with the schools to ensure they are aware of infection control policies and procedures and to whom questions can be addressed.

Resources

- Subscribe to the LTC Information Update Listserv by visiting and following the prompts at:
 - <http://cntysvr1.lphamo.org/mailman/listinfo/ltr information update>

- To view past Listserv posts and the LTC blog, visit:
 - <http://health.mo.gov/blogs/ltrblog/>

- Visit the site below to view newsletters and additional resources:
 - <http://health.mo.gov/seniors/nursinghomes/providerinfo.php>

Resources

- <http://www.cms.hhs.gov/Medicare/Provider-Enrollment-and-Certification/SurveyCertificationGenInfo/>
- CMS Quality, Safety and Oversight Group Memos – click on ‘Policy and Memos to States and Regions’
 - *Normally released on Fridays*
- <https://qsep.cms.gov/welcome.aspx>
- <https://qcor.cms.gov>

QUESTIONS

Section for Long Term Care Regulation

573-526-0706

Tracy.niekamp@health.mo.gov